

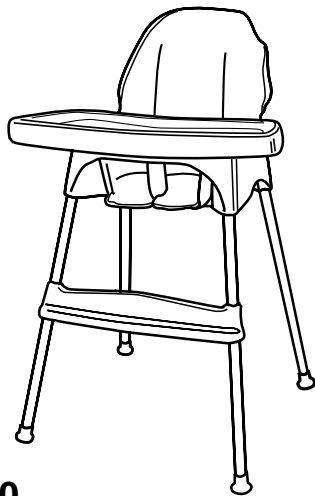
GRACO®

Highchair

OWNER'S MANUAL

Model No. _____
Serial No. _____

Dear Customer,
Please fill in the model and serial numbers above from the label on the bottom of the seat of your new highchair.



Model No. 3170

Congratulations on your purchase of a Graco® highchair!

Graco is the recognized leader in the design and manufacture of quality baby products. We believe your new Graco® highchair is a wise choice, promising many hours of enjoyment for your baby.

Before using your highchair, please take a few minutes to read this Owner's Manual. The short time you spend reading these instructions will help you to use your highchair properly.

Please save your Owner's Manual for future use.

Customer Satisfaction

Our goal is to make every product the best it can be! We are also committed to supporting our products after purchase. If you would like to speak with Graco about your product, please contact our **Customer Service Department at 1-800-345-4109** or visit our Internet website, www.gracobaby.com. Our knowledgeable staff will be ready to answer any questions you may have concerning parts, use or maintenance. When you call, please have the **model and serial numbers** ready so your call may be processed quickly and efficiently.

WARNING

Failure to follow these warnings and the assembly instructions could result in serious injury or death.

Prevent serious injury or death from falls or sliding out. Always secure child in the restraint.

Secure your child at all times with the restraint system provided. The tray is not designed to hold your child in the highchair. It is recommended that the highchair be used only by children capable of sitting upright unassisted.

STRANGULATION HAZARD: DO NOT place highchair in any location where there are cords, such as window blind cords, drapes, phone cords, etc.

Never leave child unattended. Always keep your child in view.

FOLLOW ASSEMBLY INSTRUCTIONS CAREFULLY. If you experience any difficulties, please contact the Customer Service Department.

HIGHCHAIR IS USED for a child between 6 months and 3 years of age. Maximum weight 37 pounds (16.8 kg).

DO NOT FORCE TRAY against child. Use only the four adjustment positions. Be sure both tray latches are in armrest slots.

NEVER LIFT CHAIR with child in seat.

DISCONTINUE USING YOUR HIGHCHAIR should it become damaged or broken.

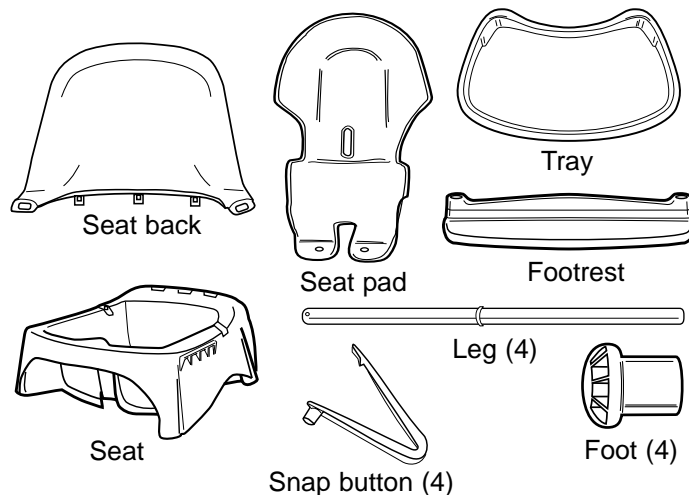
PARTS LIST

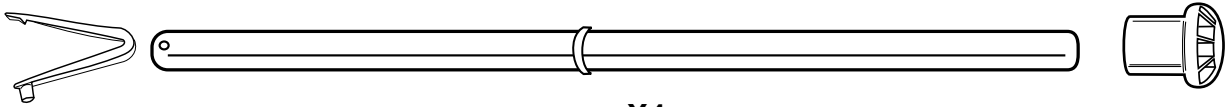
CHECK that you have all the parts listed below **BEFORE** assembling your highchair. If any parts are missing, call Customer Service at 1-800-345-4109

or visit our Internet website, www.gracobaby.com.

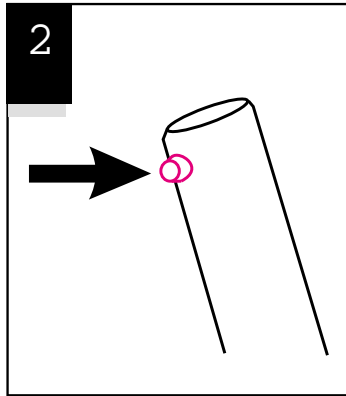
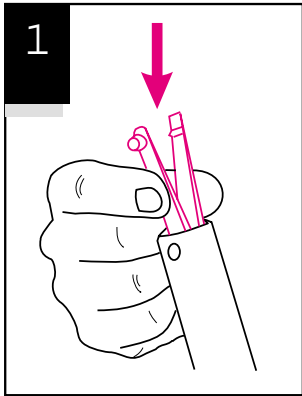
THIS PRODUCT REQUIRES ADULT ASSEMBLY.

No tools required for assembly.

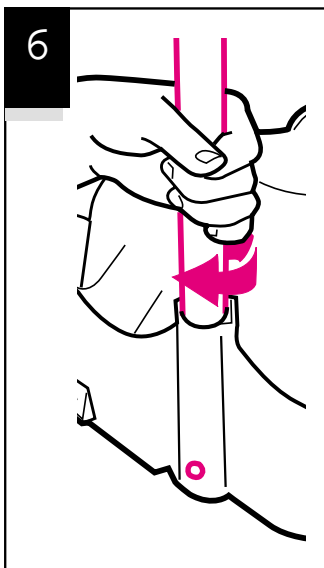
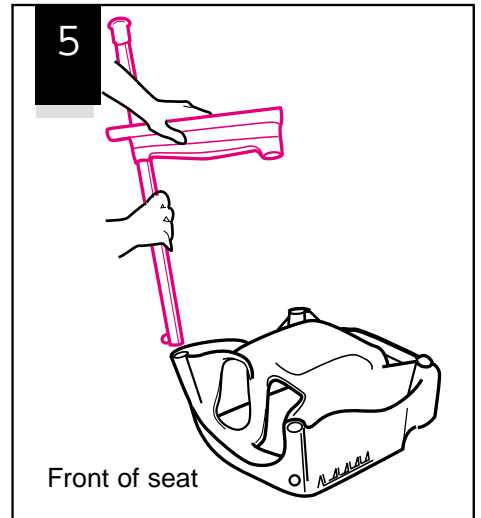
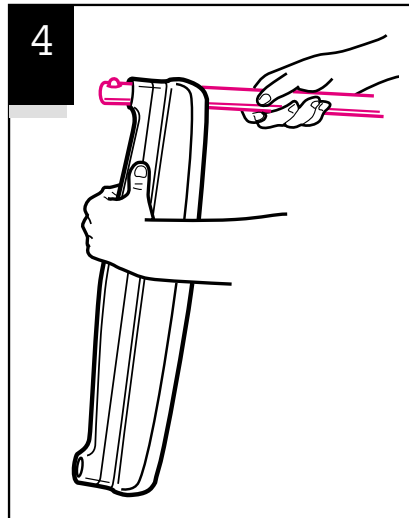
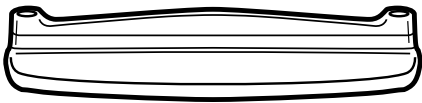
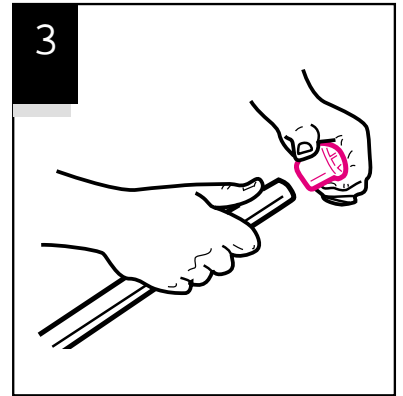




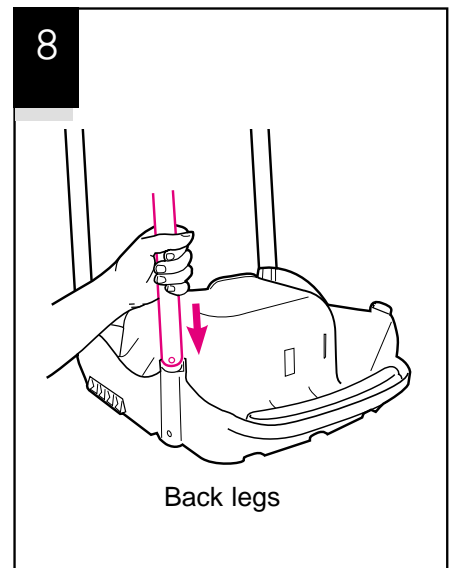
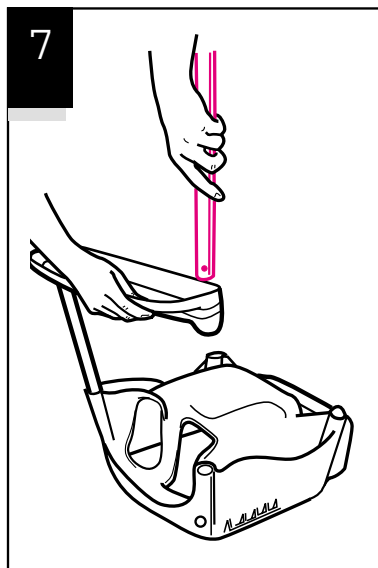
X4

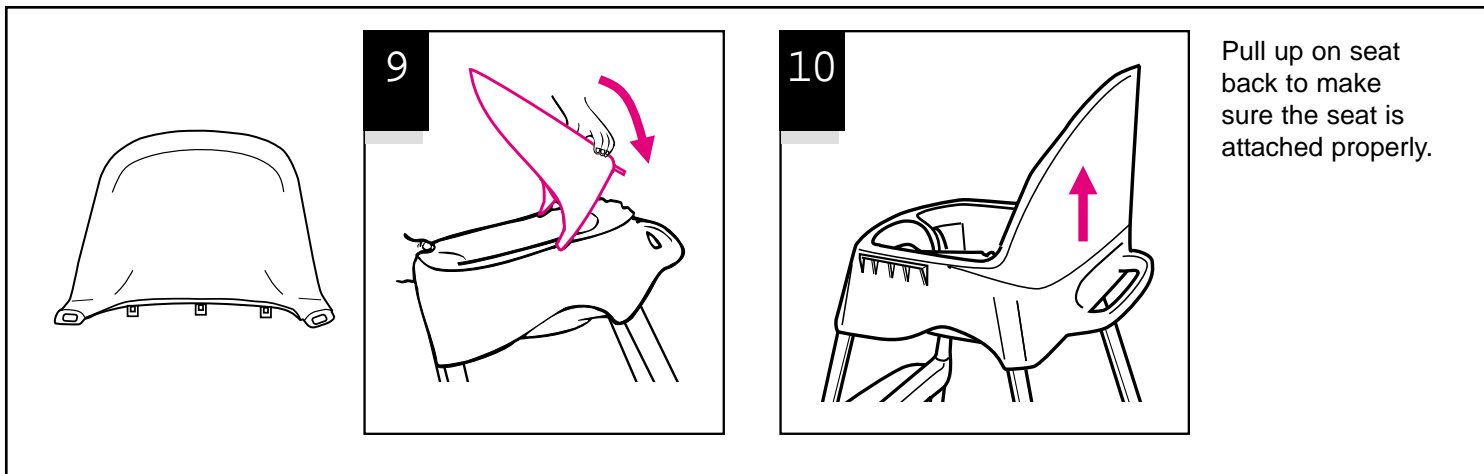


The button should pop out of the hole in the leg tube as shown.

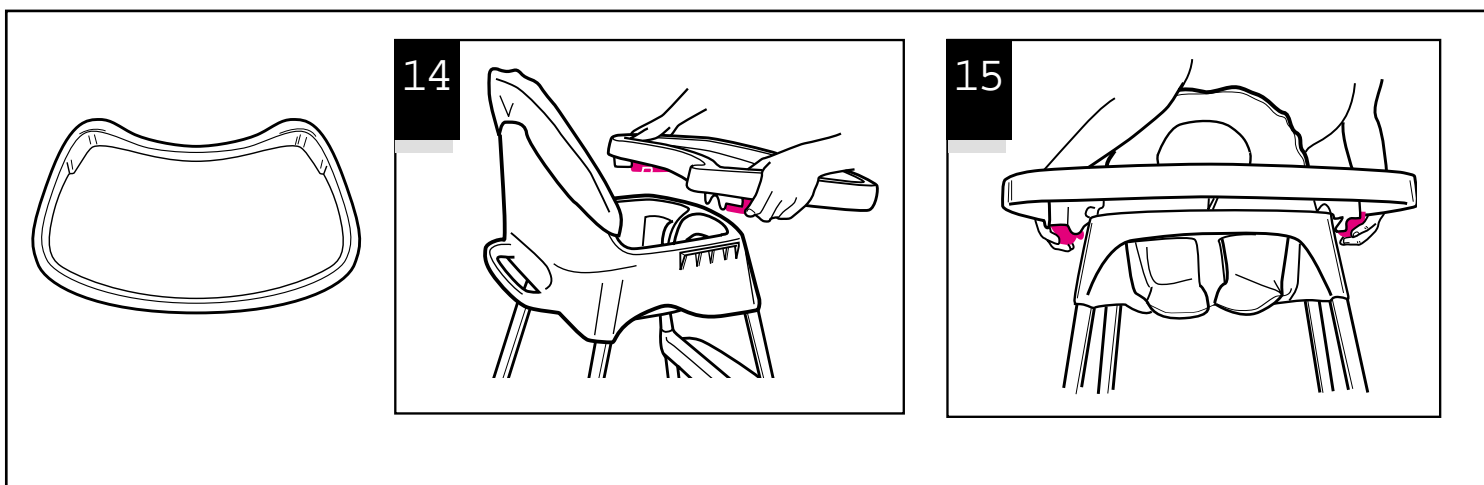
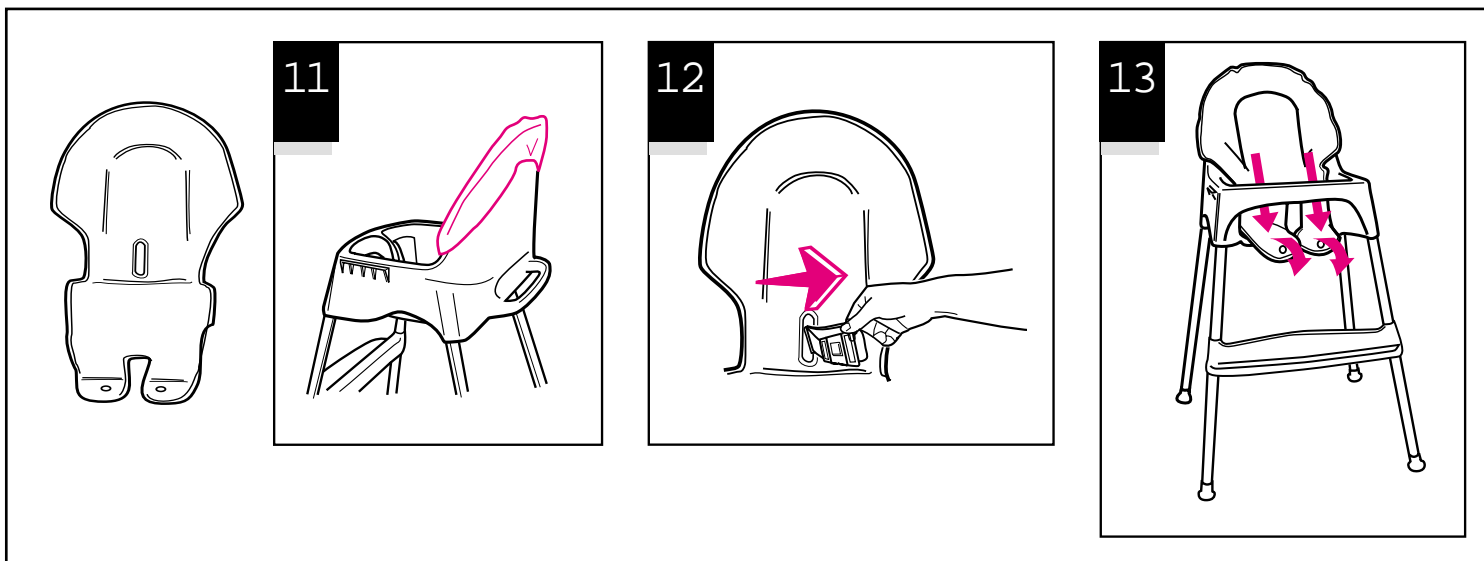


Button **MUST** snap through hole in seat.





Pull up on seat back to make sure the seat is attached properly.

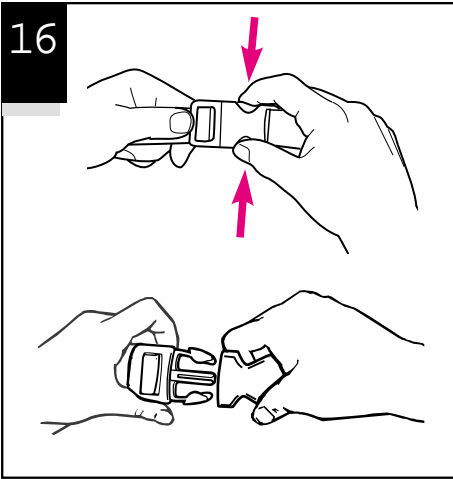


CARE AND MAINTENANCE

FROM TIME TO TIME CHECK YOUR HIGHCHAIR for worn parts, torn material or stitching. Replace or repair the parts as needed. Use only Graco® replacement parts.

TO CLEAN HIGHCHAIR FRAME, use only household soap or detergent and warm water. **NO BLEACH.**

16

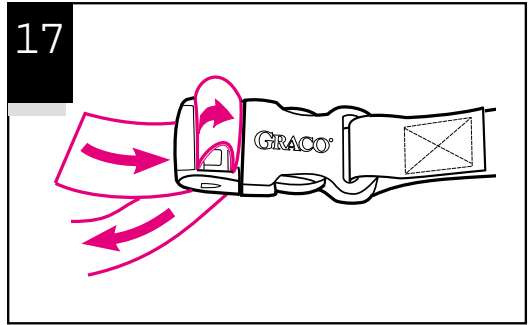


To remove the seat belt, follow steps 17 and 18.

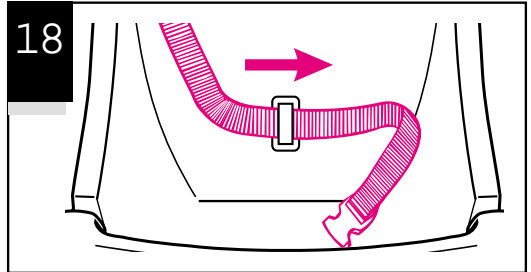
To rethread buckle, reverse steps.

CHECK by pulling on seat belt. Belt should not slip.

17



18



Replacement Parts

Instructions for ordering highchair parts:

Complete form below. Your highchair model number **MUST** be included on the form to ensure proper replacement parts. **Your model number can be found on a sticker on the bottom of the seat. Payment must accompany your order.**

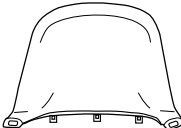
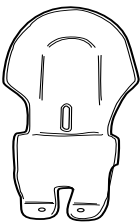
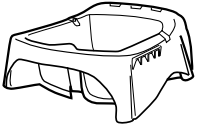

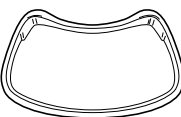
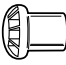
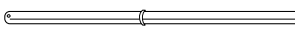

IF YOU NEED HELP

If you have any questions or if you need any parts not listed, please call toll-free:

1-800-345-4109

or visit our Internet website, www.gracobaby.com.

Return the form below with payment to:
GRACO CHILDREN'S PRODUCTS INC.
CUSTOMER SERVICE DEPARTMENT
P.O. BOX 100, MAIN STREET
ELVERSON, PA 19520

| | | | |
|--|---|---|---|
|  \$10.00 |  \$12.00 | Model Number _____ (Must be filled in) | Total: _____ |
|  \$15.00 |  \$10.00 | | Shipping & handling*: \$5.00 |
|  \$12.00 |  \$2.50 (each) or 4/\$5.00 | SHIP TO: | 6% sales tax (PA only): _____ |
|  \$8.00 (each) |  No charge | Name _____ | Total amount due: _____ |
| | | Address _____ | *Outside the continental U.S., please call for shipping cost. |
| | | City, State, Zip _____ | <input type="checkbox"/> Check enclosed (payable to Graco Children's Products Inc.) |
| | | () _____ | <input type="checkbox"/> Charge to credit card: |
| | | Telephone _____ | Account #: _____ |
| | | | <input type="checkbox"/> Visa |
| | | | <input type="checkbox"/> MasterCard |
| | | | <input type="checkbox"/> Discover |
| | | | Expiration date: _____ |
| | | | Signature: _____ |
| | | | |

Circle parts needed